

FROM : (mt) 80 TO : (mt) 1810 SCALE : 1/ 500

Client: TAP OIL

Field : CRAIGOW

Rig Name : KAN TAN IV

DFE-BCD (m) : 74

Final TD (m) : 1800.00

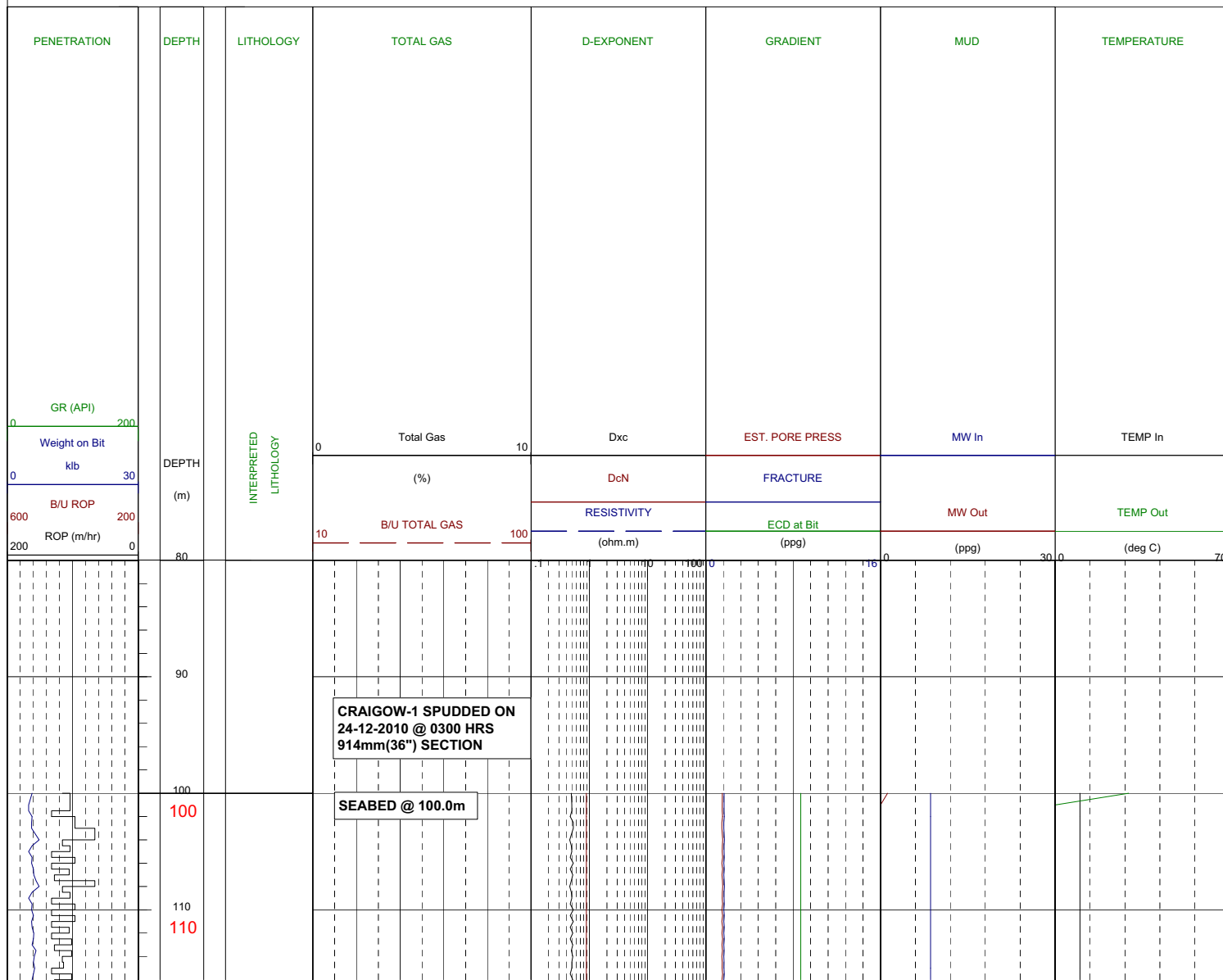
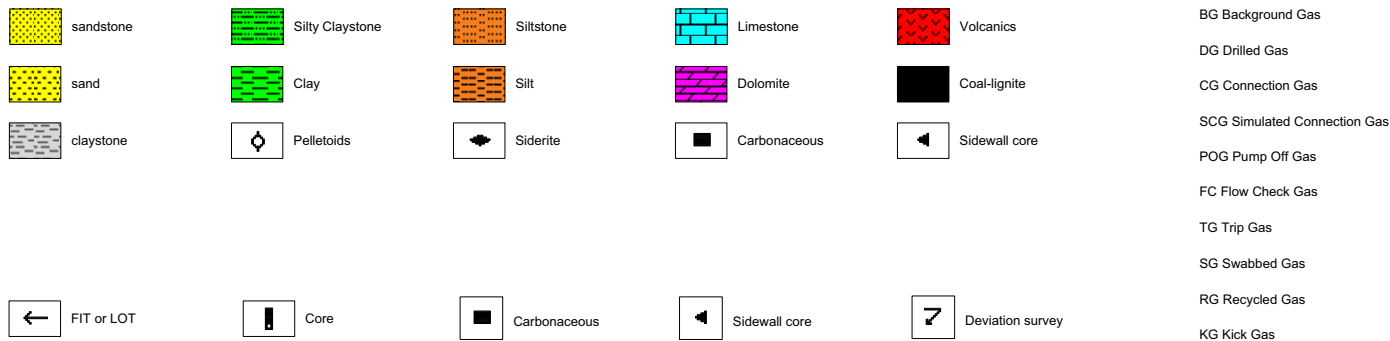
Well : CRAIGOW 1

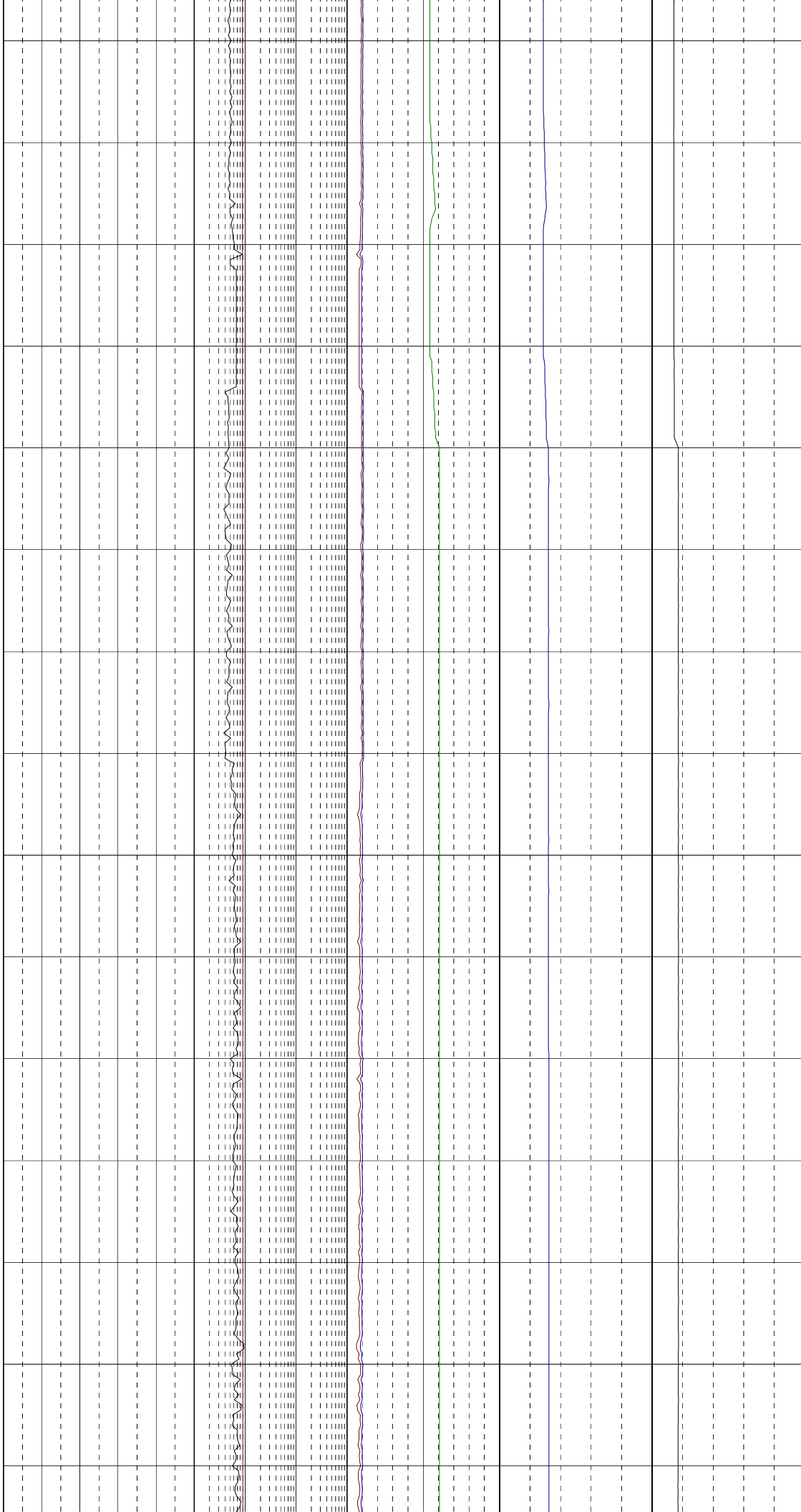
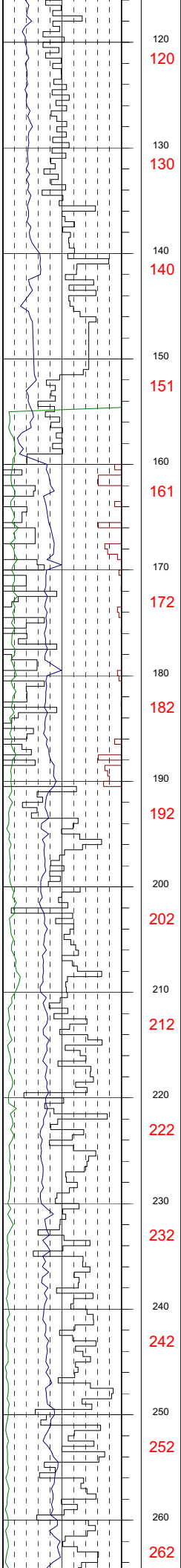
Country : AUSTRALIA

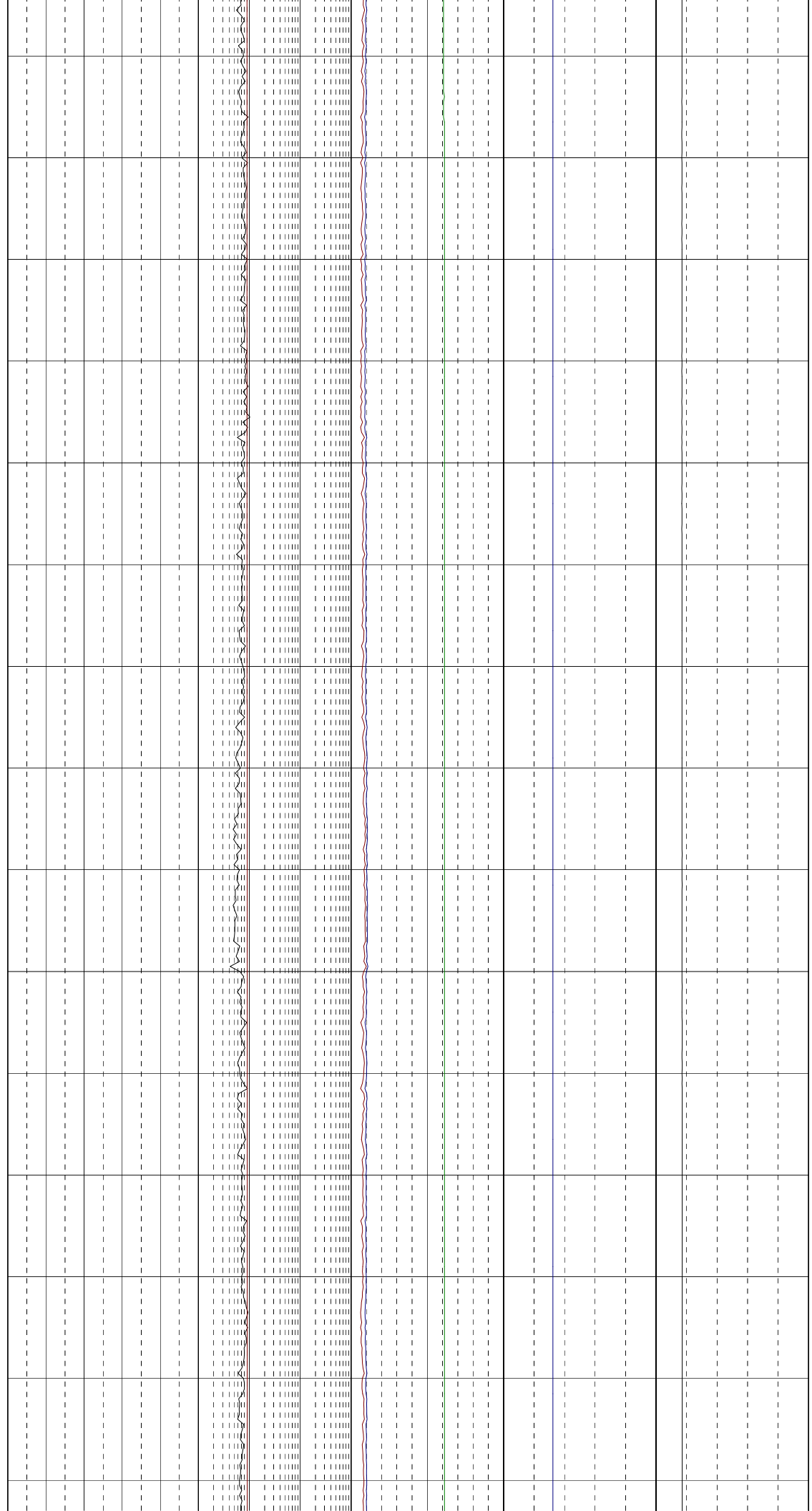
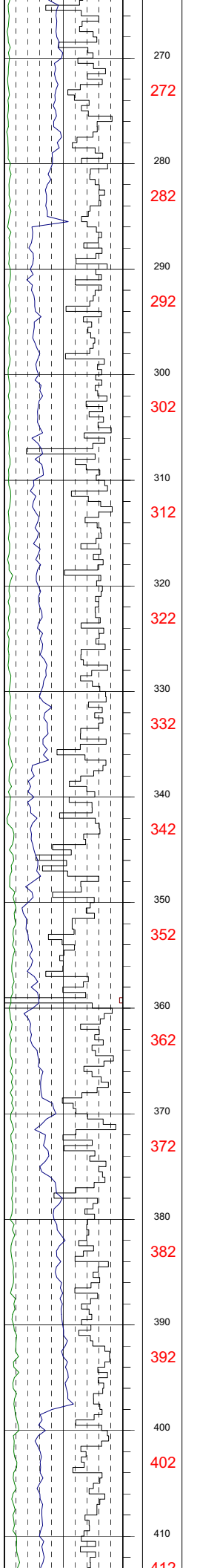
Rig Type : SEMI SUB

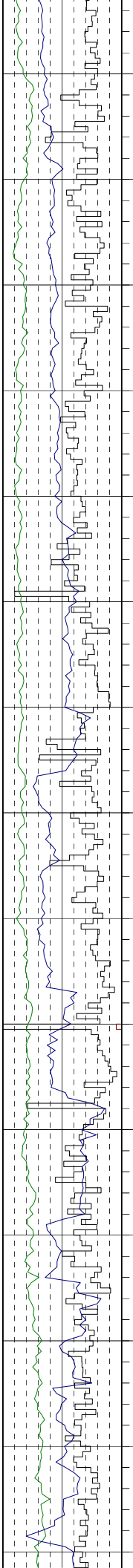
DFE-Sea Bed (m) : 100

Final TVD (m): 1799.92









420

422

430

432

440

442

450

452

460

462

470

472

480

482

490

492

500

502

510

512

520

522

530

532

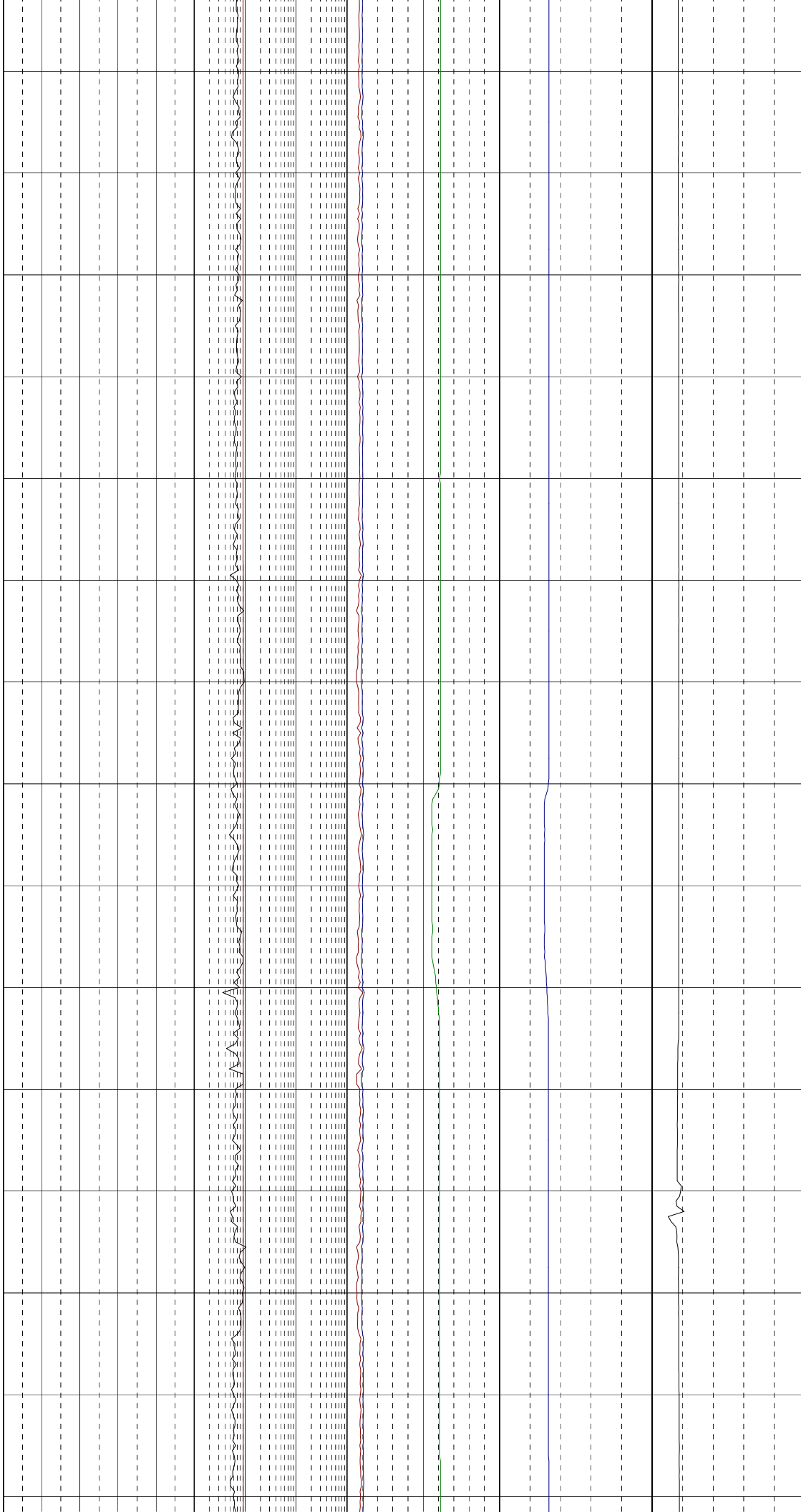
540

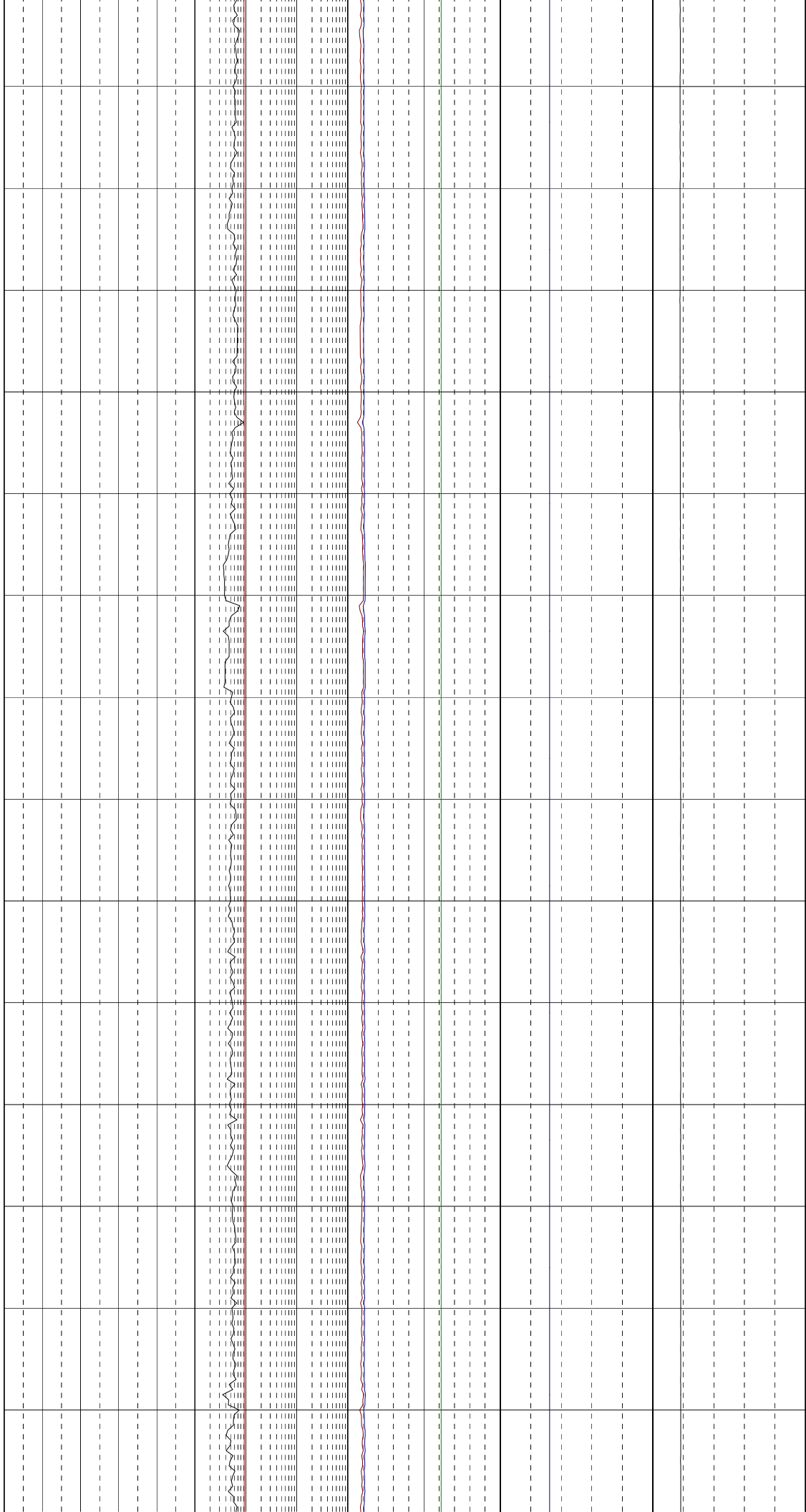
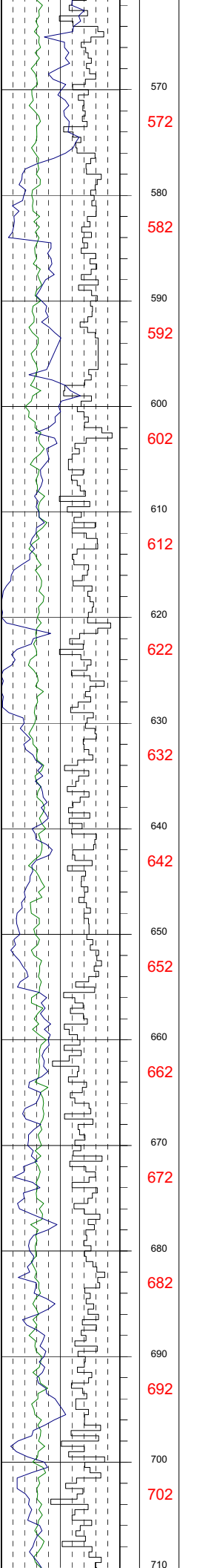
542

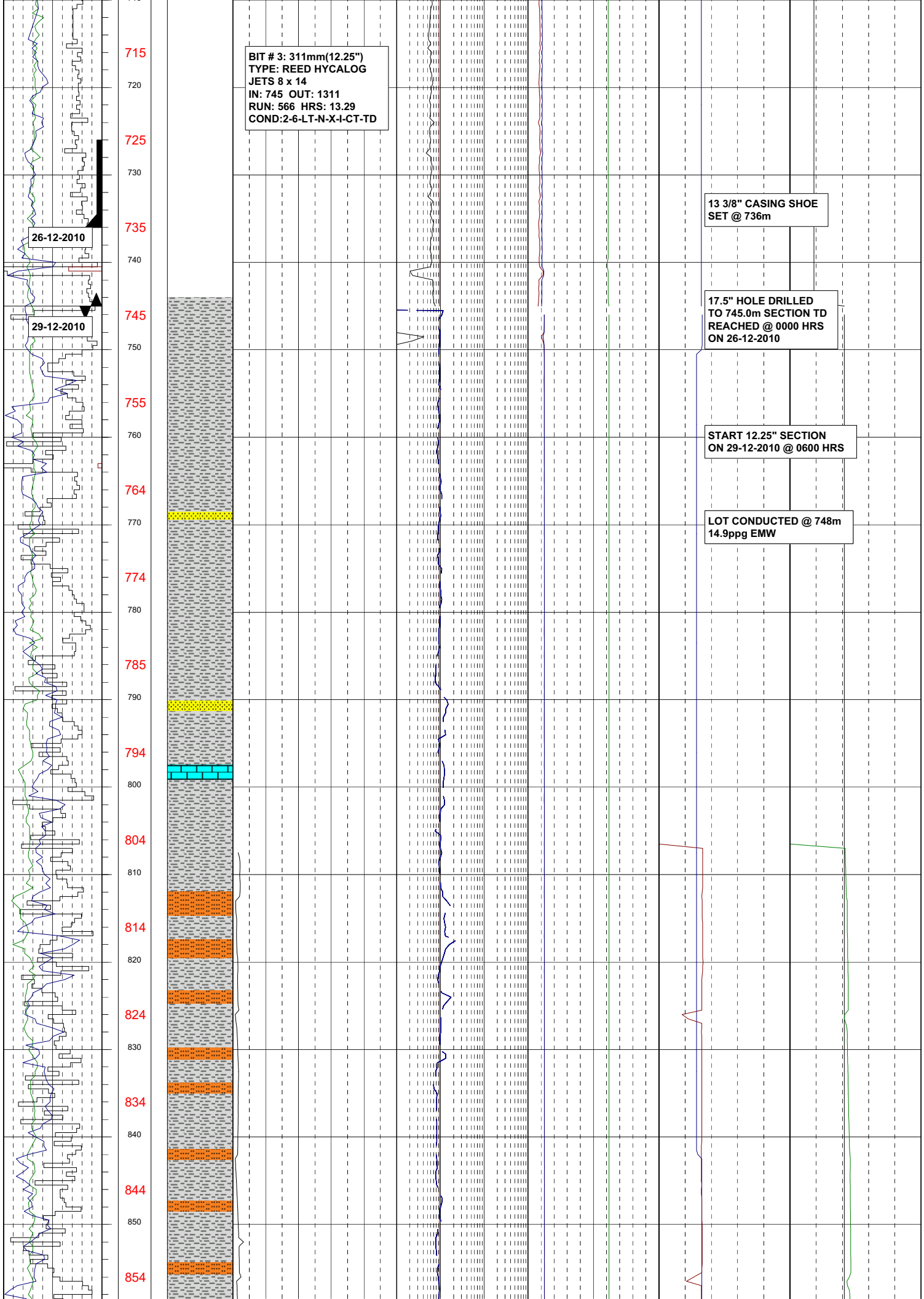
550

552

560







BIT # 3: 311mm(12.25")
TYPE: REED HYCLOG
JETS 8 x 14
IN: 745 OUT: 1311
RUN: 566 HRS: 13.29
COND: 2-6-LT-N-X-I-CT-TD

13 3/8" CASING SHOE
SET @ 736m

17.5" HOLE DRILLED
TO 745.0m SECTION TD
REACHED @ 0000 HRS
ON 26-12-2010

START 12.25" SECTION
ON 29-12-2010 @ 0600 HRS

LOT CONDUCTED @ 748m
14.9ppg EMW

26-12-2010

29-12-2010

715
720
725
730
735
740
745
750
755
760
764
770
774
780
785
790
794
800
804
810
814
820
824
830
834
840
844
850
854

